

## UML Modeling Exercise

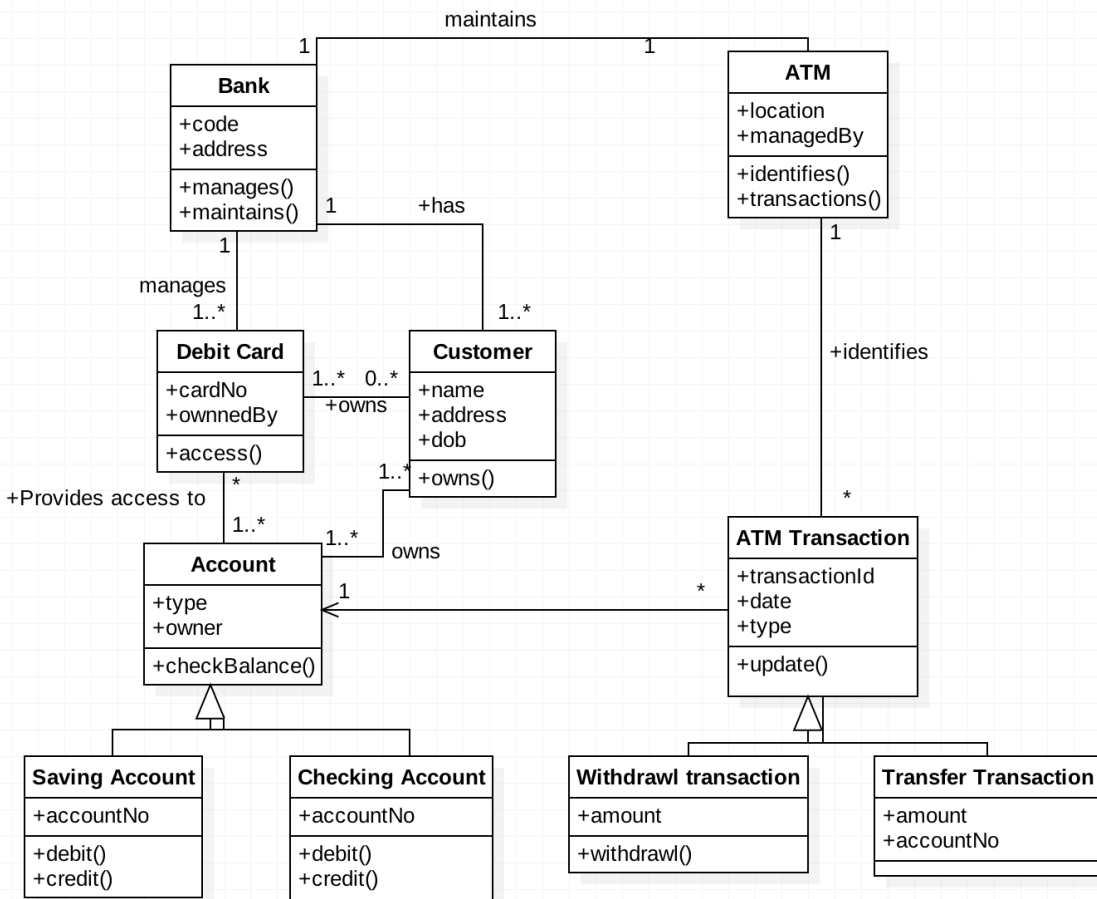
1. Work with a group of 4 to create a UML sequence diagram for the Withdraw Cash success use case for the ATM system.
2. Is it possible to include extension 3a (cash not available) in the same sequence diagram? Why or why not?
3. Work with your group of 4 to create a UML communication diagram for the Withdraw Cash use case.
4. What does the communication diagram add to the functional model of the ATM system?
5. Could this information be shown in the class diagram?
6. Work with your group of 4 to create a UML activity diagram for the Withdraw Cash use case.
7. Were you able to include the extensions in the same diagram?
8. Would it make sense to include the Deposit Cash and Deposit Check in the same UML activity diagram? Why or why not?

# UML Modeling Exercise

9. Work with your group of 4 to create a UML state diagram for a complete ATM session.

10. How is it possible to represent the entire ATM system in a single UML state diagram?

11. What should you do if the state diagram is too complex to read easily?



# UML Modeling Exercise

